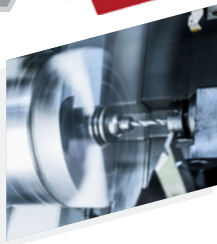


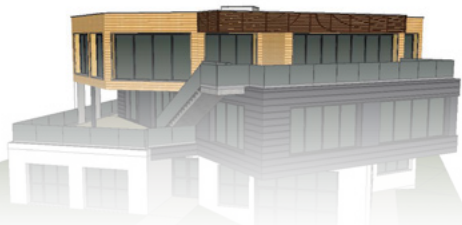
## THE TEST CENTER IN THE FUTURE

The PRACARTIS Group Test Center is evolving, as are the needs of our customers who are looking for **global machining solutions in order to reduce development times** and above all **to have first prototypes manufactured on external industrial equipment** meaning no disruption to their production.



A new **800m<sup>2</sup> infrastructure** entirely dedicated to the Research & Development Department of the PRACARTIS Group will come to life in early 2021. It will be equipped with **new machining centers and metrology machines**, and its **team will be reinforced for a better technical support**.

PRACARTIS Group, in addition to its recognized know-how in the design and implementation of global high precision machining solutions, will become a **key player concerning the research for material and strategic innovation** in an ever-widening range of industrial activities and areas.



## SOME CUSTOMERS OF THE TEST CENTER

AIRBUS  
GROUP

Le Bélier

APCO  
TECHNOLOGIES

STELIA

SAFRAN  
AIRCRAFT ENGINES

Eurocast  
Brive

worknc  
Dental

DUQUEINE  
GROUP

## OUR PARTNERS

Robotmaster  
CAD/CAM FOR ROBOTS

Mastercam

HBM

STÖBER

HALDER

STÄUBLI



## QUOTATION ON REQUEST

PRACARTIS GROUPE  
Chemin de la Forêt  
74250 PEILLONNEX - France

Tel. : +33 (0)4 50 36 95 44  
[info@pracartis.fr](mailto:info@pracartis.fr)



[pracartis.fr](http://pracartis.fr)



[linkedin.com/company/pracartis-groupe](https://www.linkedin.com/company/pracartis-groupe)

PRACARTIS  
GROUPE

TEST CENTER



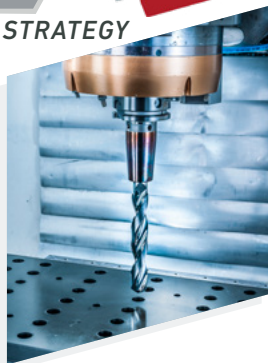
Pracartis Groupe - photos Credits : Pracartis Groupe & Studio Sémaphore  
PLEASE DO NOT LITTER

## R&D AND TEST CENTER

### DEDICATED TO YOUR MACHINING STRATEGY

Partner of companies, engineering schools and university laboratories, approved training center, involved in many French and European R&D projects, the PRACARTIS Group is part of a **voluntary and continuous innovation approach** to meet the needs of machining processes improvement.

PRACARTIS Group has deployed a **fully equipped technical test center**, open to its customers, allowing the company to **measure cutting power and forces, vibrations, surface conditions**, in the most challenging fields of machining (*multilayers assemblies, hard or refractory metals, alloys, ceramics, etc.*).



## ACHIEVEMENTS OF THE TEST CENTER

Every day, the Test Center performs a wide range of various missions :

- **Tests definition** - machine process, fixture, equipment.
- **Development tests on a new tool geometry.**
- **Tool/material pair trials** - definition of appropriate cutting conditions depending on the operation, the material, the tool and the cutting fluid.
- **Tool life testing.**
- **Definition of machining strategies** as well as **tests on products, tools, materials and cutting fluids.**

Our role also includes **technical support to define a global machining solution** (*spindle, tools, strategies, machines, cutting fluid, process and cutting conditions*). Each trial comes with a **full report including test conditions, selected operating parameters and results.**



## OUR EQUIPMENT

### CNC MACHINING CENTERS

Deckel FP3CC 3 axis (retrofitted)

*Spindle speed 24'000 rpm - 35 kW*

*Others on request (from 30 to 100'000 rpm)*

DMG-MORI DMU-50 5 axis

*Production of complex parts*

*Spindle speed 20'000 rpm - 35 kW*

ROLAND 5 axis milling machine DWX-51D

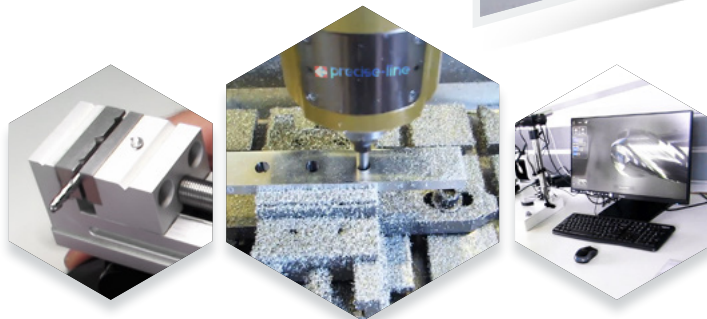
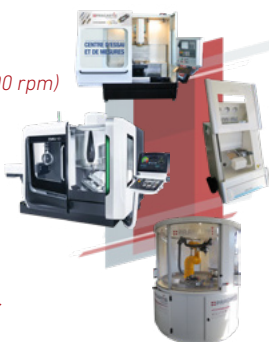
*Tests on CAD-CAM cutting tools*

Robotic machining cell - Stäubli TX2-90

*Spindle or workpiece mounted*

*7 axis : rotary table and tool changer*

*Force and Power measurement*



## MAIN ACTIVITIES AREAS



AERONAUTICS



AEROSPACE



CAR INDUSTRY



WATCHMAKING

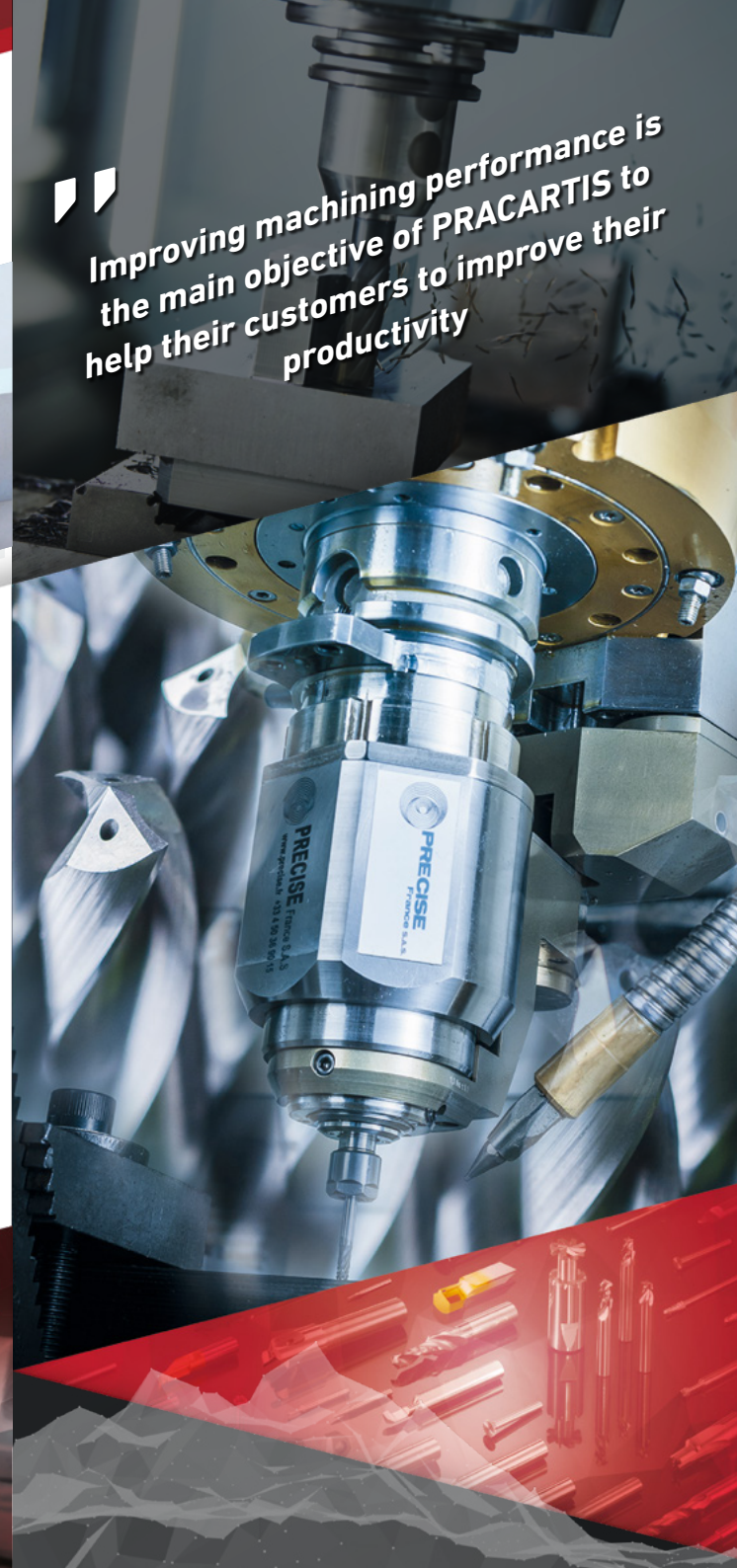


DENTAL  
& MEDICAL



DIGITAL

Improving machining performance is the main objective of PRACARTIS to help their customers to improve their productivity



### MEASUREMENT SYSTEMS

9255C 6-components Kistler dynamometer

WITIS® & Cut Optimizer®

data acquisition softwares

DigitalWay WattPilote wattmeter

CTC triaxial accelerometer

HBM multi-component force sensor ( $F_x$ ,  $F_y$ ,  $F_z$ ,  $M_z$ )



### VISUALIZATION & MEASUREMENT

Binocular with 4K resolution camera

Quality inspection

